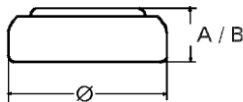


Data Sheet

Type Number 20317
Designation IEC SR 516 SW
System Silver oxide / Zinc / NaOH

Nominal Voltage 1,55 V
Typical Capacity C 10,5 mAh
 Load 68 kOhm, at 20°C down to 1.2 V



Weight (approx.) 0,18 g
Volume 0,04 ccm
Coding Date of Manufacturing
 Month / Year

Temperature Ranges min max.
 Storage -10°C 60°C
 Discharge -10°C 60°C

Dimensions min max.
 Diameter (Ø) 5,65 5,8
 Height (A/B) 1,47 1,65

Segment Watch

Main Applications Watch
 Electronic

Typical Capacities (at 20°C)

Discharge Type	Load	End Voltage:	1.2 V
Continuous 24h/d, 7d/w	121000 Ω	Time:	412 h