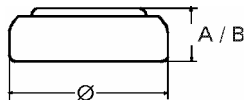


Data Sheet

Type Number 20337
Designation IEC SR 416 SW
System Silver oxide / Zinc /
 NaOH - Electrolyte



Nominal Voltage 1,55 V
Typical Capacity C 8,3 mAh
 Load 100 kOhm, at 20°C down to 1.2 V

Weight (approx.) 0,13 g
Volume
Coding..... Date of Manufacturing
 Month/Year

Temperature Ranges min max.
 Storage -10°C 60°C
 Discharge -10°C 60°C

Dimensions min max.
 Diameter (Ø)..... 4,65 4,80
 Height (A/B) 1,47 1,65

Segment Watch

Main Applications Watch
 Electronic Devices

Typical Capacities (at 20°C)

| Discharge Type | Load | End Voltage: | 1.2 V |
|--------------------------|----------|--------------|-------|
| Continuous 24h/d,7d/w | 100000 Ω | Time: | 479 h |