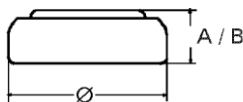


Data Sheet

Type Number 20346
Designation IEC SR 712 SW
System Silver oxide / Zinc /
 NaOH - Electrolyte



Nominal Voltage 1,55 V
Typical Capacity C 9 mAh
 Load 68,1 kOhm, at 20°C down to 1.2 V

Weight (approx.) 0,3 g
Volume 0,06 ccm
Coding..... Date of Manufacturing
 Month / Year

Temperature Ranges min max.
 Storage -10°C 65°C
 Discharge -10°C 65°C

Dimensions min max.
 Diameter (Ø) 7,65 7,90
 Height (A/B) 1,14 1,29

Segment Watch

Main Applications Watch
 Photo
 Electronic

Typical Capacities (at 20 °C)

Discharge Type	Load	End Voltage:	1.2 V
Continuous	68100 Ω	Time:	390 h
24h/d,7d/w		Capacity [mAh]:	9
Current [μA]:	23	Energy [mWh]:	14

All Data contained herein is for single cells

For battery applications, performance data may vary from single cell data, depending on specific battery configuration

VARTA Microbattery GmbH, Daimlerstr. 1, D-73479 Ellwangen/Jagst
 Tel.: (+49) 7961/921-0, Telefax: (+49) 7961/921-553

Subject to change without prior notice!
 Date of issue: 2012-04-12