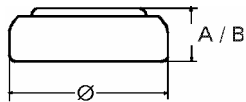


## Data Sheet

**Type Number** ..... 20393  
**Designation IEC** ..... SR 48  
**System** ..... Silver oxide / Zinc /  
 KOH - Electrolyte



**Nominal Voltage** ..... 1,55 V  
**Typical Capacity C** ..... 75 mAh  
 Load 13 kOhm, at 20°C down to 1.2 V

**Weight (approx.)** ..... 1,08 g  
**Volume** ..... 0,24 ccm  
**Coding**..... Date of Manufacturing  
 Month/Year

**Temperature Ranges**  
 Storage ..... min max.  
 -10°C 65°C  
 Discharge ..... -10°C 65°C

**Dimensions**  
 Diameter (Ø) ..... min max.  
 7,55 7,9  
 Height (A/B) ..... 5,0 5,4

**Segment** ..... Watch / High Drain

**Main Applications** ..... Watch  
 Photo  
 Electronic

**Typical Capacities (at 20°C)**

Discharge Type	Load	End Voltage:	1.2 V
Continuous	13000 Ω	Time:	615 h
24h/d, 7d/w		Capacity [mAh]:	75
Current [µA]:	120	Energy [mWh]:	115