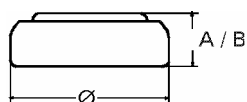


## Data Sheet

**Type Number** ..... 20394  
**Designation IEC** ..... SR 45  
**System** ..... Silver oxide / Zinc /  
 NaOH - Electrolyte



**Nominal Voltage** ..... 1,55 V  
**Typical Capacity C** ..... 56 mAh  
 Load 13 kOhm, at 20°C down to 1.2 V

**Weight (approx.)** ..... 1,04 g  
**Volume** ..... 0,24 ccm  
**Coding**..... Date of Manufacturing  
 Month/Year

**Temperature Ranges**

	min	max.
Storage .....	-10°C	65°C
Discharge .....	-10°C	65°C

**Dimensions**

	min	max.
Diameter (Ø) .....	9,3	9,5
Height (A/B) .....	3,3	3,6

**Segment** ..... Watch

**Main Applications** ..... Watch  
 Photo  
 Electronic

**Typical Capacities (at 20°C)**

Discharge Type	Load	End Voltage:	1.2 V
Continuous	13000 Ω	Time:	500 h
24h/d, 7d/w		Capacity [mAh]:	56
Current [µA]:	120	Energy [mWh]:	80