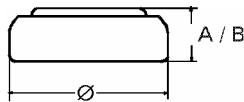


## Data Sheet

**Type Number** ..... 20399  
**Designation IEC** ..... SR 57  
**System** ..... Silver oxide / Zinc /  
KOH - Electrolyte



**Nominal Voltage** ..... 1,55 V  
**Typical Capacity C** ..... 42 mAh  
Load 13 kOhm, at 20 °C down to 1.2 V

**Weight (approx.)** ..... 0,75 g  
**Volume** ..... 0,17 ccm  
**Coding** ..... Date of Manufacturing  
Month / Year

**Temperature Ranges** min max.  
Storage ..... -10 °C 65 °C  
Discharge ..... -10 °C 65 °C

**Dimensions** min max.  
Diameter (Ø) ..... 9,15 9,5  
Height (A/B) ..... 2,4 2,7

**Segment** ..... Watch / High Drain

**Main Applications** ..... Watch  
Photo  
Electronic

**Typical Capacities (at 20 °C)**

Discharge Type	Load	End Voltage: 1.2 V	
Continuous	13000 Ω	Time:	375 h
24h/d, 7d/w		Capacity [mAh]:	42
Current [µA]:	120	Energy [mWh]:	67